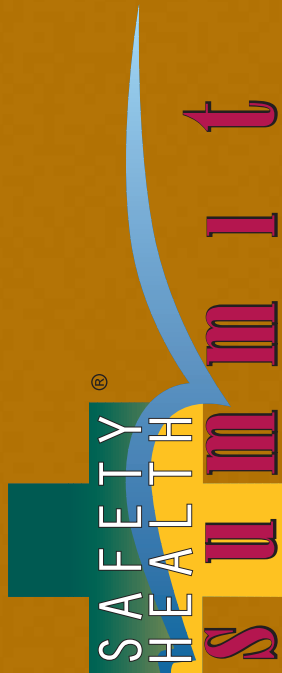


Seeking Solutions, Sharing Strengths



Perfect for problem solving professionals in safety, risk management, human resources, facilities, business continuity and environmental and health! The Summit conference and tradeshow provides outstanding opportunities for learning new ideas and concepts, discovering innovative products and services, and making connections. The Safety and Health Summit is an excellent resource for your training needs.



**National Safety Council
Greater Omaha Chapter**
11620 M Circle
Omaha, NE 68137-2231
www.SafeNebraska.org

Non-Profit Org.
U.S. Postage
PAID
Omaha, NE
Permit No. 113

36 Topics, 6 Tracks Each Day

- Safety Management/Injury Prevention
- Risk Management/ Business Continuity Planning
- Work Comp
- Challenges in the Workplace
- Safety Pro
- Regulatory

Seeking Solutions, Sharing Strengths



Greater Omaha Chapter

Deep discounts for
registration before
April 3, 2009!

Summit Sponsor



MAY 12-13, 2009
QWEST CENTER, OMAHA
WWW.SAFETYANDHEALTHSUMMIT.COM

Seeking Solutions Sharing Strengths

Safety and Health Summit and Tradeshow is THE event to attend in 2009!

At Summit, you'll:

- Discover powerful educational sessions
- Learn from expert knowledgeable speakers in specialized career fields
- Explore innovative products and services
- Connect with other professionals in your field

Whether you are an industry newcomer, a seasoned professional or somewhere in between, the Summit can help you reach new heights of knowledge and empower YOU for long-term success!

Your Return on Investment will be Huge!

- Reduce injuries, cut work comp costs and improve your bottom line through implementation of new ideas, tips and up-to-date techniques learned at Summit
- Increased knowledge will enhance your career
- Receive a CD of seminar presentations and exhibitor directory that will serve as an ongoing, effective and efficient information resource
- Increased awareness of products and services discovered at the tradeshow
- Business networking relationships - both new and renewed

Highlights

May 12 8:30 a.m. Welcome to the Summit!

- "The Energized Approach" by Michael Melnik, Minneapolis, MN



"The Energized Approach" including "Melnik's 10 Essential Energy Sources" offers a time-tested approach that increases the success of new programs by energizing the work environment with motivated, receptive and involved participants.

Sponsored by:



May 13 11:45 a.m. Awards and Sustenance!

- Presentation of Colors, USAF Color Guard, 55th Wing
- Entertainment by Chad and Elaine Stoner, saxophonist and jazz artist
- Luncheon
- Introducing...

Your 2009 Safety Icon
Safety Champions of Greater Omaha
Greater Omaha's 2009 Safest Companies

- "One Voice Leadership" by Bruce Wilkinson, CSP, Covington, LA



The real key to personal and organizational success is "One Voice Leadership" Learn what that means and how that can happen so that the mission, vision and core values of your organization can reach the optimum outcome.

More Highlights See Page 6

Summit Speakers...

Hand Picked for You!

Our knowledgeable problem-solving experts coming to the Summit are the result of an all points search by the seminar committee. Speakers hail from Canada, Texas, California, Minnesota, Missouri, Louisiana, New Jersey, Iowa and Nebraska. Speakers and their biographies are online at www.safetyandhealthsummit.com

Choose Six Sessions from Six Tracks:

- Safety Management/Injury Prevention
- Work Comp
- Risk Management/Business Continuity
- Challenges in the Workplace
- Safety Pro
- Regulatory

Track Highlights

Safety Management/Injury Prevention

Learn to go beyond

Sponsored by:

"Accepting 'Good **Warren Distribution** Enough'

Performance;" transform your training efforts with Melnik's R.E.P. approach; reduce injuries using Wilkinson's unique motivational and accountability methods; investigate the fundamentals of Lean Six Sigma and potential contributions to safety; tour Warren Distribution's site and see why they are consistently recognized as one of Greater Omaha's Safest Companies.

"*Culture and Behaviors for Safety*" will review the influence of culture on behavior and vice versa. You'll be able to see your organization in a new and positive light and realize you may be closer to your goal than you realize.

Work Comp

Learn how to identify

Sponsored by:

"*Work Comp Fraud*" and what you can do about it; "*Workplace Safety & Premises Liability*" will include a review of recent NE and IA case law and other liability issues



including steps to take after an incident, and working with subcontractors and third parties. "*Understanding Work Comp Benefits from an HR Standpoint*" will take you to an understanding of the interplay of employment policies and specific employee benefits. In "*Reducing Strain of Repetitive Injuries*" you'll find concepts and strategies to identify and reduce these costly injuries. From the Workers' Comp Court, you'll learn their efforts at "*Medical Cost Containment and Other Hot Button Workers' Compensation Issues*." Gain an understanding of all the pieces, parts and roles of participants in "*Anatomy of a Claim*."

Risk Management/Business

Continuity

CERT, widely recognized disaster training for neighborhoods, has positives for the workplace. Learn

Sponsored by:



More information

To learn more, visit www.safetyandhealthsummit.com.

how CERT can benefit your workplace. Part of the issue is - has everyone gotten out okay? In "*We Gotta Get Out of this Place*" about OSHA's exit routes, you'll be on your way to safety evacuation. But what happens after the disaster? ... especially if "*Your Written Business Continuity Plan Just Burned with Half the Factory... What Next?*" That plan is key to continuing business. It's a must-see seminar. "*Effective Observations*" are key to safety improvements and "*Protecting Young Workers, What Can These Kids Do?*" will keep you on the right side of labor laws.

Challenges in the Workplace

It's very special to be designated VPP, but really, what does it take?" Learn how from a VPP Star site (Cargill)

Sponsored by:



in "*Why Would I Want to be a VPP Star?*" We're all faced with cultural diversity these days. Brian Alexander, "*The Safety Guy*" lays it out for you in "*The Multi-Cultural Workforce - Challenges and Opportunities*." Wellness can save you money - learn how in "*7 Steps to a Well Workplace Program*." Al Roth has come all the way from Irvine, CA to share his success in "*Selling Safety to Your Internal Customers*." We found him at the NSC Congress. More challenges include "*FMLA, ADA...New, but Improved?*" and "*Conflict Resolution*." That should come in real handy.

The Safety Pro

Developing leadership in safety is for the Safety Pro. It's all lumped together

Sponsored by:



here for you in seminars to help you in all aspects of safety leadership from: "*New Techniques to Create a Positive Safety Culture*," "*Revolutionary Processes*," "*Developing Leadership*," "*Communicate to Lead*" to the overall "*Safety Leadership - The Roles, Criteria and Characteristics for Safety Leadership*." "*Safe Travel Strategies*," avoiding crime, local and overnight, are more important than ever in this economy.



Regulatory

Compliance with regulatory issues is a top priority in any workplace.

Sponsored by:



If you have concerns about LockOut/TagOut, Machine Guarding, Safety at Heights, or DOT regs and drug testing issues, you'll want to attend this track. "*Does 'Annually' Really Mean Every Year?*" will update you on OSHA training requirements and expectations. Remember also, there are regulations for "*White Collar Safety*." You'll find those in this track.

Additional Sponsorship Support:

Arctic Insulation
Profit Advantage
Products Unlimited
ASSE
Adesta, LLC
The Creative J

tuesday, MAY 12

8:00 am	Registration Begins-Pre-Function Area					
8:00-8:30 am	Coffee and Connections-Peter Kiewit B					
9:30 am-4:30 pm	Exhibits Open-Peter Kiewit A-B and Pre-Function Area Safety Icon Voting 9:00 am to 3:00 pm					
8:30-10:00 am	Opening General Session- "The Energized Approach" Michael Melnik					
10:00-10:30 am	Break Vote for Your Safety Icon! View/Voting 9:00 am to 3:00 pm					
SeminarTracks	Safety Management (S)	Work Comp (W)	Risk Management/ Business Continuity Planning (R)	Challenges in the Workplace (C)	Safety Pro (SP)	Regulatory Environmental Issues (RE)
10:30 am-11:45 pm	S1 <i>Stop Accepting 'Good Enough!' Addressing Average Performance</i> Andrea Frederickson, American Institute of Management Council Bluffs, IA	W2 <i>Workers' Compensation Fraud.... It's a CRIME</i> Chuck Starr, NE Dept of Insurance Omaha, NE	R3 <i>CERT ...It's Good for Your Business</i> Keith Deiml, Eastern Nebraska CERT, Omaha, NE	C4 <i>What Does it Really Take to be in VPP and a Model of Excellence?</i> Monty Gartin, Cargill Inc., Blair, NE	SP5 <i>Quit Feeding the Monsters; New Techniques to Create a Positive Safety Culture</i> Kevin Cobb, SafeStart/SafeTrack Belleville, Ontario	RE6 <i>DOT for the Employer - Your Company and the Federal Regulations</i> Investigator Gary Bergmeier, State Patrol Carrier Enforcement, Lincoln, NE
11:45-1:00 pm	Lunch with Exhibitors		Safety Icon Critiques			
1:00 -2:15 pm	S7 <i>Site Tour at Warren Distribution</i> Jeff Nelson, Plant Manager; Crystal Anderson Omaha, NE	W8 <i>Workplace Safety & Premises Liability - A review of recent NE case law.</i> Matt Hammes, Locher Pavelak Dostal Braddy & Hammes, LLC, Omaha, NE	R9 <i>Slaying the Monsters Through Better Observations: Dangerous States of Mind</i> Kevin Cobb, SafeStart / SafeTrack, Belleville, Ontario	C10 <i>The Multi-Cultural Workforce - Challenges and Opportunities</i> Brian Alexander, "The Safety Guy", Minneapolis, MN	SP11 <i>Revolutionary Process for Safety Professionals</i> Jay Rohman, Encouraging Safety, Troy, MO	RE12 <i>Safety for Maintenance - Lock Out/TagOut; Machine Guarding; 70E</i> Dave Stolp, National Safety Council, Omaha, NE
2:15-2:45 pm	Break Vote for Your Safety Icon! View/Voting 9:00 am to 3:00 pm					
2:45-4:00 pm	S13 <i>From Knowing to Doing: Gaining Maximum ROI from Your Employee Training Efforts</i> Michael Melnik, The Energized Approach Minneapolis, MN	W14 <i>Understanding Work Comp Liability Regarding Horse Play, Recreational Activities and Company Sponsored Events</i> Paul Larson, Attorney Berens & Tate, Omaha, NE	R15 <i>Your written Business Continuity Plan just burned up with half the factory. Now what?</i> Brian Alexander, "The Safety Guy", Minneapolis, MN	C16 <i>Wellness Ideas - 7-Step Well Workplace Program</i> Howie Halperin, Becky Vinton-Dorn, Wellness Council of the Midlands, Omaha, NE	SP17 <i>Safety Leadership - The Roles, Criteria and Characteristics for Safety Leadership</i> Barry Ball, Kellogg's, Omaha NE	RE18 <i>The Machine Guarding Standard 1910.212- What it Really Means to You.</i> Monte Gartin, Cargill Inc., Blair, NE
4:30-7:00 pm	ASSE - Awards, Honors & Foundation Night			Tradeshow Open for Visitors Until 5:00 p.m.		
4:30-7:00 pm	Summit Night Out, Upstream Restaurant and Brewery, hors d'oeuvres, drinks and conversation. (no host)					



wednesday, MAY 13

7:30 am	Registration Begins-Pre-Function Area					
7:00-8:00 am	Coffee and Connections-Peter Kiewit B					
7:00 am-3:00 pm	Exhibits Open-Peter Kiewit A-B and Pre-Function Area					
SeminarTracks	Safety Management (S)	Work Comp (W)	Risk Management/ Business Continuity Planning (RM)	Challenges in the Workplace (C)	Safety Pro (SP)	Environmental Issues (RE)
8:00-9:00 am	S19 <i>Redefining Safety Leadership & Accountability: Managing and Motivating Employees to Work Safely™</i> Bruce Wilkinson, Workplace Consultants, Inc., Covington, LA	W20 <i>Repetitive Injuries?! Reducing the Risk!</i> Roger Kuhfahl, Excel Physical Therapy, Omaha, NE	R21 <i>Protect Stakeholders Against Infectious Disease and Biological Threats</i> Matt Conlon, SAFTPAK, Little Falls, NJ	C22 <i>Selling Safety To Your Internal Customers: A Marketing Outline for Safety Professionals</i> Al Roth, Occupational Health & Safety Manager, Newport Corporation, Irvine, CA	SP 23 <i>Close Calls and Correction/Near Misses</i> Darwin Craig, OSHA, Omaha, NE	RE24 <i>Safety at Heights</i> Steve Eaton, MSA Chicago, IL
9:00-9:15 am	Break					
9:15-10:15 am	S25 <i>Lean Manufacturing and Safety -</i> Dr. Michael Riley, University of Nebraska, Lincoln, NE	W26 <i>Medical Cost Containment and Other Hot Button Workers' Compensation Issues</i> Glenn Morton, Workers' Compensation Court - State of Nebraska, Lincoln NE	R27 <i>"We Gotta Get Out of this Place!" OSHA's Requirements for Exit Routes</i> Doug Fletcher, OSHA, Omaha, NE	C28 <i>The ADA and FMLA....New, but Improved?</i> Arlene King, Concentra Health Services Addison, TX	SP29 <i>Developing, an Empowering and Encouraging Leadership</i> Jay Rohman, Encouraging Safety, Troy, MO	RE30 <i>White Collar Safety - What Do We Cover?</i> Dave Stolp, National Safety Council, Omaha, NE
10:15-10:30 am	Break					
10:30-11:45 am	S31 <i>Culture and Behaviors for Safety</i> Al Roth, Occupational Health & Safety Manager, Newport Corporation, Irvine, CA	W32 <i>Anatomy of a Claim -Reducing Work Comp Costs</i> Phil Stegmaier, Alegent Health, Omaha, NE	R33 <i>Protecting our Young Workers - Youth Injury Statistics and Child Labor Laws</i> Bill Hetzler, Nebraska Workforce Development DOL, Omaha, NE	C34 <i>Conflict Resolution and Techniques</i> Tom Freeman, White, Wulff & Jorgensen, Omaha, NE	SP35 <i>"Brave New World of Travel" - How to Stay Safe and Avoid Crime</i> Bill Mulherin, National Safety Council, Omaha, NE	RE36 <i>Does 'Annually' Really Mean 'Every Year'?</i> OSHA Training Requirements and Expectations Doug Fletcher, OSHA Omaha NE
11:45-1:30 pm	Awards and Sustenance "One Voice Leadership" Bruce Wilkinson					
1:30-3:00 pm	Exhibits Open		3:00 p.m. Summit Ends			



More Summit Highlights

COFFEE AND CONNECTIONS
Coffee and continental breakfast each day in the Grand Ballroom.



VOTE FOR YOUR SAFETY ICON!

Top contenders for the 2009 Safety Icon will be shown on the tradeshow floor continuously May 12. Celebrity judges, Scott Voorhees (KFAB), Heidi Joy (entertainer), Nathan Moore (KPTM) and Marty Conboy (Omaha City Prosecutor and musician) will introduce and review the top contenders during lunch. The winner, selected by public ballot, will be recognized at the Awards Luncheon on May 13 and receive a check for \$1,000. To learn more go to www.SafeNebraska.org/awards.

SUMMIT NIGHT OUT

Join exhibitors and attendees at the Upstream Restaurant and Brewery for great hors d'oeuvres, drinks and conversation after the last session, May 12.



ASSE CELEBRATION

Join ASSE Great Plains Chapter members for their annual "evening out," May 12, 4:30 - 7:00 p.m. (Pre-registration required)



SUMMIT TRADESHOW

- 100+ exhibitors showcasing safety, health and environmental products and services
- Register for the daily CASH grand prize
- "Safety Shorts"™ on the tradeshow floor
- Download tickets beginning April 23, www.safetyandhealthsummit.com

"SAFETY SHORTS"

Problem-solving snippets on the tradeshow floor

'ONE BUSINESS CENTER' PROVIDED BY SOLUTIONONE

Let the 'One Business Center' keep your business running. SolutionOne will be providing print, copy, fax and scan services during Summit.



CONTINUING EDUCATION CREDITS

- To ensure receipt of CEUs, sign in at each session and complete a seminar evaluation.
- Attend two days, receive 1 full credit.
- Attend day one, receive 0.6 credit.
- Attend day two, receive 0.4 credit.

WIN A 1GB FLASH DRIVE

Recruit a first-time Summit full conference attendee in the Summit Ambassador Program! See rules online.

BECOME A SUMMIT SHAREHOLDER

Everyone attending Summit 2009 who attended in 2008 is a Summit Shareholder. Shareholders are companies and organizations who have consistently supported the Safety and Health Summit by consecutively attending the conference or exhibiting at the tradeshow two years or more.

Summit Shareholders receive:

- Special ribbon nametag
- Special display recognition
- Certificate for one share of Summit Stock



Thank You

Summit Committee

Larry Gomez, Chair, Greater Omaha Chamber of Commerce; Lynn Beebe, Union Pacific Railroad; David Ambrose, Ph.D., University of Nebraska at Omaha; Robert Sorensen, FireGuard, Inc.; Pete Neddo, M.U.D.; Michael Hilt, Concentra Medical Services; Randy Trail, Omaha World-Herald; Brian Flaherty and Kay Farrell, NSC,GOC

Summit Seminar Planning Committee

Randy Trail, Chair, Omaha World-Herald; Jerry Everidge, Oakland Foods; Barb Freeman, WorkFit Occupational Health; Steve Henk, Oxbow Enterprises; Bill Hetzler, NE Workforce Development DOL; Karry Johnson, West Corporation; Paul Larson, Berens and Tate; Pete Neddo, MUD; Don Birkentall, Quality Pork International, Inc.; Brian Flaherty, NSC,GOC

2009 Exhibitor Planning Committee

Michael Hilt, Chair, Concentra Medical Services; Jason McDonald, General Fire & Safety, Inc.; Bill Hetzler, Nebraska Workforce Development DOL; Jason McMeen, Fuchs Industrial Supply; Sara Schroeder, Excel Physical Therapy; Tim Pruch, Electric Fixture & Supply; Andy Wetjen, IBT Safety, Inc.; Bill Sawyer, Rite Style Optical, Bridget Rolenc, Methodist Health Systems; Brian Flaherty, NSC,GOC

National Safety Council, Greater Omaha Chapter Conference Staff:

Heather Watts, Registration
Donna Crouse, Awards & Seminar Materials
Kelvin Thurman, Exhibit Sales
Brian Flaherty, Vice President, Conferences and Member Services

Eric Koeppel, Accounting
Melanie Mitera, Creative Services Manager
Geoff Squire, Exhibit Sales
Kay Farrell, President/CEO

Visit the Tradeshow!

Find products and services to solve workplace challenges!

Tradeshow open: May 12, 9:30 a.m. - 4:30 p.m.
May 13, 7:30 a.m. - 3:00 p.m.

Tradeshow
Sponsored by:



Tradeshow Exhibitors

Exhibitor list as of
February 10, 2009

Acme Dock Specialists, Inc.#113 Brad Robinson www.acmedock.com	Headsetters #105 Marvin Holst www.headsetters.com	OSHA #715 Doug Fletcher www.osha.gov
AED Zone - Zoll Products #609 Carol Gupton aedzone@cox.net	Hirease #305 Barrett Walker www.hirease.com	Precision Industries #94 & 107 Scott Smith www.precisionind.com
Alegent Occupational Health #202 Nancy Robertson www.alegent.org	IBT Safety Inc. #513 & 603 Andy Wetjen www.ibtinc.com	Quinnian Health #504 Matt Conlon www.Quinnianhealth.com
Alegent Occupational Health Services #115 Pramila Kalaga www.alegent.org	IOSH #804 Pam Rosa www.dol.gov	Reis Environmental / Wise Safety & Environmental #416 John Hoffman www.WiseSafetyEnv.com
Allstar Rewards / Russell Associates #508 Ed Lathrop eddied@quixnet.net	John Day Company #110 & 207 Steve Regan www.johnday.com	Rite Style Optical #512 Bill Sawyer www.ritestyle.com
American Red Cross #511 Jill Orton, Rachel Moyer and Brent Jensen www.redcrossomaha.org	Jones Automotive #809 Rick Quistad www.jonesauto.com	Rural Comprehensive Care Network #608 Stuart Huneke Shunke@neb.rr.com
AMI Environmental #205 Randy Kehres www.amienvironmental.com	LaRue Coffee #611 Tracy O'Gorman www.laruecoffee.com	Safe Start/Safe Track #514 Kevin Cobb www.safestart-safetrack.com
ATC and Associates #408 Brian Stemmermann www.atcassociates.com	Libra Safety Products/ Medical Enterprises #604 Todd Fitch www.librasafety.com	Solution One #99 & 102 Julie Hickman www.solutiononenow.com
Click It Don't Risk It #806 Cherie Ferber www.clickitdontriskit.com	LifeGuard MD #507 Patty Wrich www.LifeGuardMDUSA.com	The Creative J #502 Jill Adams and Jeff Krueger www.thecreativej.com
Community Rehab #206 Phil Davidson www.communityrehabpt.com	Life Source Chiropractic #307 Cara Reed cara@lifesourcechiropractic.com	The Cure #505 Dan Hosford www.thecuresafety.com
Comp Choice #301 Cindy Lainson www.compchoice.net	Methodist Health System #406 Bridget Rolenc www.nmhs.org	The Nebraska Medical Center #402 Cindy Hanssen www.nebraskamed.com
Concentra Medical Centers #111 Michael Hilt www.concentra.com	Metropolitan Utility District #415 Pete Neddo www.mudnebr.com	Two Men and a Truck #605 Craig Kirchmann www.twomenandatruck.com
Dakota Security Systems Inc #501 Jeff Brace www.dakotasecurity.com	Michael Melnik #403 www.Michaelmelnik.com	Union Pacific Railroad #410 Rita Chase www.up.com
E.D. Bullard # 405 Marty Lang www.Bullard.com	Mine Safety Appliance #414 Steve Eaton www.msanet.com	WasteCap Nebraska #801 Carrie Hakenkamp www.wastecapne.org
Electric Fixture and Supply #97 & 98 Tim Pruch www.electricfixture.com	National Safety Council, Greater Omaha Chapter #95 & 96 Kelvin Thurman, Geoff Squire, Brian Flaherty www.SafeNebraska.org	Wellness Council of the Midlands #401 Howie Halperin www.wellnesscouncil.org
Environmental Solutions #413 Dan McCarthy www.esilink.com	Nebraska Nurse Practitioners #510 Mary Carlson mcarlson@unmc.edu	Westex Inc. #612 Derek Sang www.westexinc.com
Excel Physical Therapy #302 Sara Schroeder www.excelpt.com	Nebraska Orthopaedic Hospital #104 Dana Osborne and Beth Custer www.neorthohospital.com	WorkFit Occupational Health #411 Barb Freeman bfreeman@workfitoccuhealth.com
FireGuard #506 Jim Weeks www.fireguardusa.com	Nebraska Workforce Development DOL #613 Bill Hetzler www.dol.state.ne.us	YMCA #601 Chris Area www.metroymca.org
Fuchs Machinery #203 & 204 Jason McMeen www.fuchsmach.com	Occupational Testing & Performance Center #106 Chad Vacek www.SafeEmployee.com	White Cap Construction Supply #112 Kent Eimers www.WhiteCap.net
General Fire and Safety #303 & 304 Jason McDonald www.generalfireandsafety.com	Omaha Fire & Rescue #714 1516 Jackson Street, Omaha NE 68102	Zee Medical #407 Don Igo www.zeemedical.com
Haney Shoes #308 Doug Sorenson haneyshoes@gmail.com	One Source - The Background Check Company #409 Mandy Garrod www.onesourcebackground.com	



REGISTRATION



National Safety Council,
Greater Omaha Chapter

Safety & Health Summit • May 12-13, 2009
Qwest Center • Omaha, NE



Name/Designation: CSP ASP CHMM CBCP Other _____

CEUs Yes No

Title _____

Company/Organization _____

Address _____

City _____ State _____ Zip _____

Phone _____ Fax _____ E-Mail _____

Company Contact Person/Title _____

Two Day Conference Ticket

Includes: General Sessions, Breakout Sessions (choose below), Breakfast, Breaks, Lunch (both days), Conference Materials

First Responder: By April 3, 2009 \$320 Parking included
Received Before April 21, 2009 \$415 (\$350 Member Rate) Parking included
Received After April 21, 2009 \$475 (\$430 Member Rate) Parking included
Special Student Rate \$75

One Day Conference Ticket

Includes: General Session, Breakout Sessions (choose below), Breakfast, Breaks, Lunch (day of attendance), Conference Materials

Choose Either:

Tuesday, May 12, 2009 **OR** Wednesday, May 13, 2009
Received Before April 21, 2009 \$305 (\$255 Member Rate) Parking included
Received After April 21, 2009 \$385 (\$335 Member Rate) Parking included
Special Student Rate \$40

Schedule of Events Please choose one from each time slot.

Tuesday, May 12, 2009

8:00-8:30 a.m. Coffee and Connections
8:30-10:00 a.m. Opening General Session
10:30-11:45 a.m. S1 W2 R3 C 4 SP5 RE6
11:45 a.m.-1:00 p.m. Lunch
1:00-2:15 p.m. S7 W8 R9 C10 SP11 RE12
2:45-4:00 p.m. S13 W14 R15 C16 SP17 RE18
4:30-7:00 p.m. **ASSE Banquet \$35**

Wednesday, May 13, 2009

7:30-8:00 a.m. Coffee and Connections
8:00-9:00 a.m. S19 W20 R21 C22 SP23 RE24
9:15-10:15 a.m. S25 W26 R27 C28 SP29 RE30
10:30-11:45 a.m. S31 W32 R33 C34 SP35 RE36
12:00 p.m.-1:30 p.m. Awards Luncheon

Awards Luncheon \$55

Included in two day conference and Thursday conference tickets.

Special Accommodations

Please check here if you require special accommodations. We will contact you.

Total Cost: _____

Payment Enclosed Please Invoice, Purchase Order

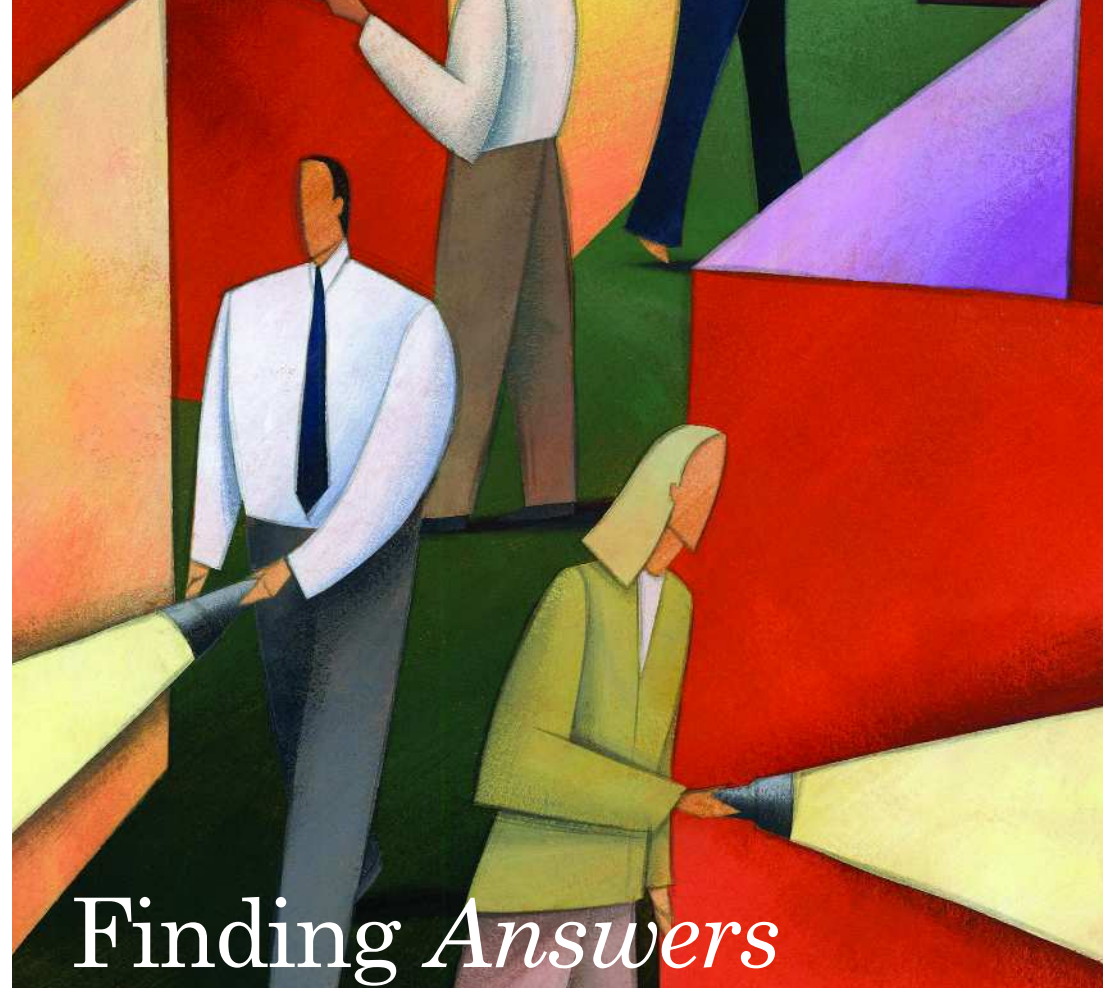
Please make checks payable to NSC, GOC.

VISA MasterCard American Express Discover

Credit Card Number

Expiration Date Name on Credit Card _____

Signature _____



HOTEL ACCOMMODATIONS:

- Hilton Omaha special rate \$139 single/double occupancy
- Available until Wednesday, April 8, 2009
- 1001 Cass Street, for reservations 1-800-445-8667
- Request National Safety Council group rate

PARKING AND DIRECTIONS:

- Conference registration fee includes convenient parking, Qwest Center.
- Leave and return privileges available for emergencies only please. Check with registration desk for a special pass before leaving.
- Parking alternatives and directions to the Qwest Center are available online at www.SafetyandHealthSummit.com.

REGISTER:

By Phone: 402-896-0454 By Fax: 402-896-6331 Online : www.SafetyandHealthSummit.com

By Mail: Send completed registration form with check, credit card payment or purchase order number to National Safety Council, Greater Omaha Chapter, 11620 M Circle, Omaha, NE 68137.

MEMBERSHIP:

If you are a member of another Safety Council, you may attend at member prices. If your company is not a member of the National Safety Council, Greater Omaha Chapter, but joins within 30 days of the event, we'll refund the difference! For more information about the many benefits of membership, please call 402-896-0454, ext 449 or visit www.SafeNebraska.org.

CANCELLATION POLICY:

In case of last minute scheduling conflicts, substitutions are welcome (with notice to conference manager, 402-896-0454). Cancellations received in writing or postmarked before April 24, 2009 will receive a refund less a \$50 processing fee. No refunds after April 24, 2009. Refunds will not be given for no-shows at the conference or luncheon.

ABOUT THE COUNCIL

Founded in 1924, the National Safety Council, Greater Omaha Chapter is a private, non-profit, 501 (c)(3), non-governmental, community based organization. In 2007, the Council took the lead in obtaining the World Health Organization's Safe Communities designation for the greater Omaha area.

